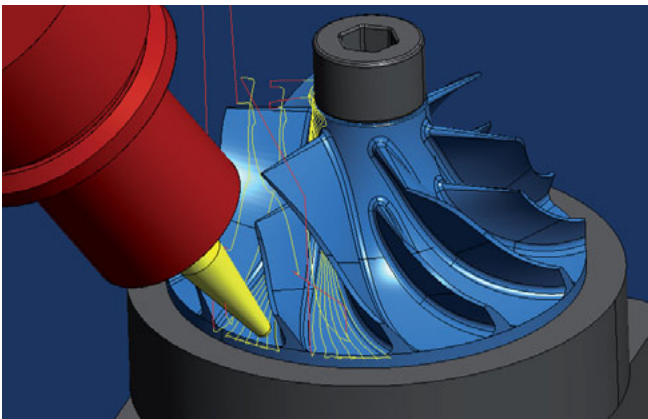
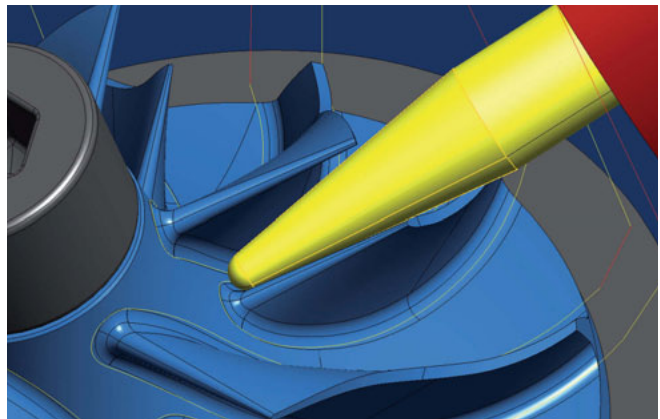


Impeller: Milled on a KERN Triton

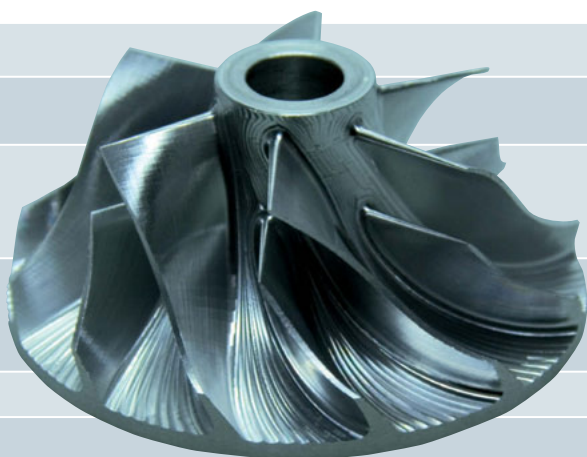
Impellers for passenger car turbochargers are manufactured in large quantities. Every second counts in serial production. The Multiblade package is synonymous with automated programming. And software allows operators to intervene as required, thereby optimising the tool orientation and feedrate so that the machining time is reduced to a minimum. Reliable collision checking and avoidance ensure maximum process reliability.



Multiblade roughing: With this strategy, the blades of a pre-turned stock are machined in a continual process using path distribution that matches the flow, various infeed options and local optimisation features.



Multiblade swarf cutting: Swarf cutting reduces machining times. The Multiblade Flank Milling strategy automatically calculates the 'snuggest' fitting tool position.



Machine: KERN Triton with hydrostatic axes

Main drive	Spindle	40.000 RPM⁻¹
Workspace	Rapid traverse/feedrate Traverse path X/Y/Z	30 m/min 500/500/400 mm
NC swivelling rotary table	Clamping surface Tilt area (A) Turning area (C) Max. workpiece weight	Ø max. 250 mm +5/-95° 360° (infinite) 60 kg
Tool	Tool magazine Max. tool length Max. tool diameter Tool adapter	75 positions 140 mm 50 mm HSK-E40
Automation	Controller	Heidenhain iTNC 530 smarT.NC
Workpiece	Measurements Material	Ø 49 x 22,5 mm Aluminium



OPEN MIND Technologies AG
Argelsrieder Feld 5 • 82234 Wessling • Germany
Phone: +49 8153 933-500 • Fax: +49 8153 933-501
E-mail: Info.Europe@openmind-tech.com
Internet: www.openmind-tech.com



KERN Micro- und Feinwerktechnik GmbH & Co. KG
Olympiastraße 2 • 82438 Eschenlohe • Germany
Phone: +49 8824 9101-0 • Fax: +49 8824 9101-124
E-mail: mtsales@kern-microtechnic.com
Internet: www.kern-microtechnic.com