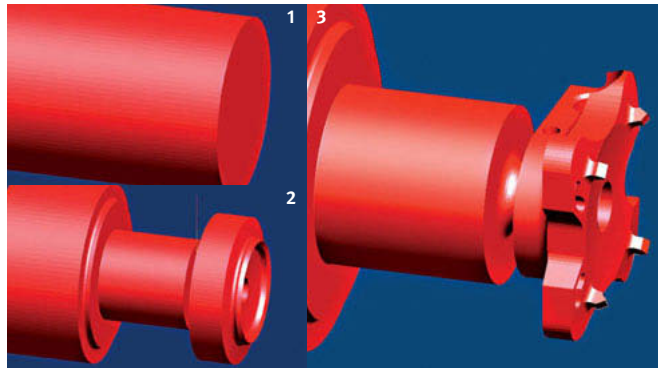
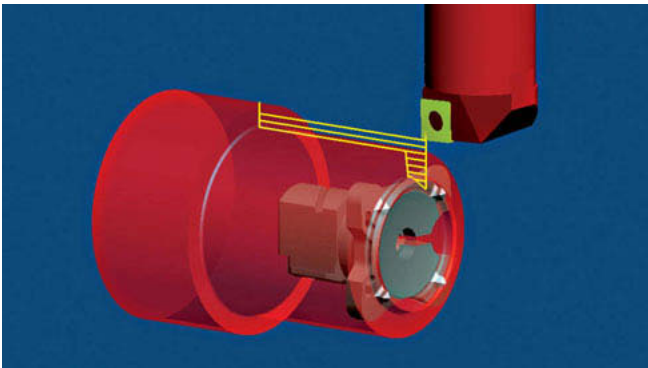


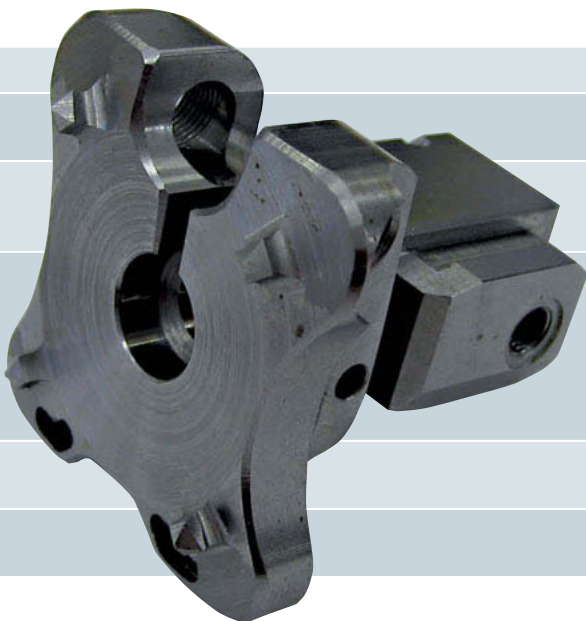
Spine implant: mill turned on a Chiron FZ 12K S

hyperMILL® provides turning, 2.5D, 3D, HSC and 5-axis milling strategies within one single user interface. This means that all the turning and milling steps of a machining job can be programmed in the same CAM software. The *millTURN* module is integrated seamlessly so that stock tracking, collision avoidance and the tool database are available for all job steps. This ensures quick and easy programming as well as superb process safety.



Turn roughing: All slanting structures are included in the straight roughing cycle. Add-on functions such as tool angle definition, stock trimming and path compensation are available for adapting the machining job to specific requirements.

Stock tracking: After each turning or milling step, the remaining stock is calculated. Thanks to precise machining status feedback for the stock, milling only proceeds in areas where rest material is detected.



Maschine: Chiron FZ 12K S

Main Spindle	RPM range	24.000 min ⁻¹
Workspace	Rapid traverses X/Y/Z	75 m/min
	Traverse path X/Y/Z	550/320/360 mm
NC table	Clamping surface	Ø 65 mm
	Swivel range (B-axis)	-10° to +100°
	Rotative range A-axis	360°
Tool	Tool magazine	24/48/64/105/177
	Milling output in St 60	80 cm ³ /min
	Drilling output in St 60	18 mm
	Tool change time	0,9 s
	Chp-to-chip time	2,4 s
	Max tool length /-Ø Tool adapter	250 mm / Ø 125 mm HSK-A 50 / HSK-163
Automation	Controller	Siemens 840 D Fanuc 31i-A5
Workpiece	Dimensions	35 x 31 x 31 mm
	Material	Titanium



OPEN MIND Technologies AG
 Argelsrieder Feld 5 • 82234 Wessling • Germany
 Phone: +49 8153 933-500 • Fax: +49 8153 933-501
 E-mail: Info.Europe@openmind-tech.com
 Internet: www.openmind-tech.com



CHIRON-WERKE GmbH & Co. KG
 Kreuzstraße 75 • 78532 Tuttlingen • Germany
 Phone: +49 7461 940-0 • Fax: +49 7461 940-8000
 E-mail: info@chiron.de
 Internet www.chiron.de