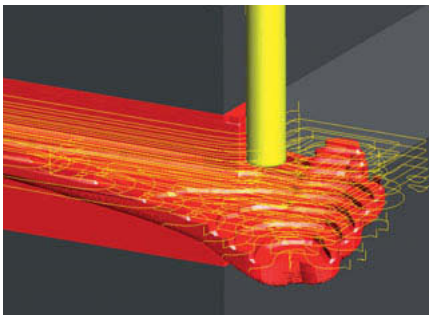
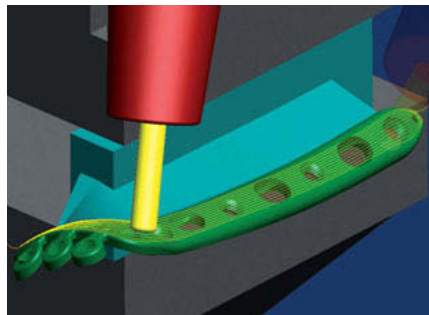


Bone plate: milled on the HSC 55 linear

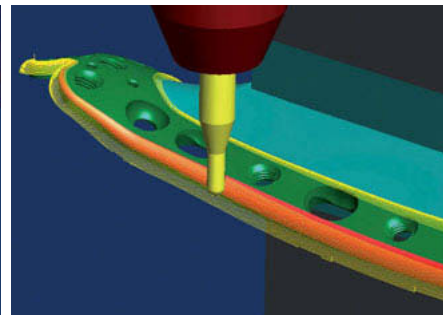
hyperMILL® provides an extensive range of 2.5D, 3D, and 5-axis strategies and special applications. All strategies can be accessed from a single user interface. Optimisation functions enable specific adjustments to be made according to individual requirements, as in titanium machining for example. Stock tracking and fully automated collision avoidance guarantee extremely convenient machining.



Arbitrary stock roughing: Precise information about the machining status of the stock guarantees that milling always takes place where there is still rest material.



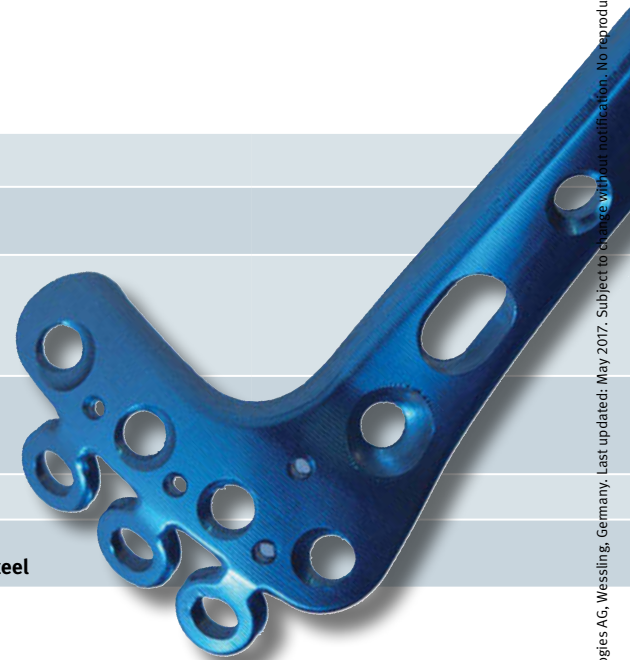
5-axis top milling: Due to greater stepover distances, milling time for moderately curved surfaces is significantly reduced. Automatic setting of the tool tilt angle ensures excellent surface quality.



ISO machining: This strategy performs high-precision milling of transition radii with the same stepover. Users can choose to machine with global alignment or along ISO curves (U and V).

Machine: HSC 55 linear

Main drive (motor spindle)	RPM range up to	28,000 RPM
Workspace	Rapid movement and feedrate	80 m/min
	Traverse path X/Y/Z	450/600/400 mm
NC swivelling rotary table	Clamping area	400 x 400 mm
	Tilt angle (A/B axis)	-10° to +110°
	C-axis range	unlimited
	Max. workpiece weight	200 kg
Tool	Tool magazine	16 to 120 spaces
	Max. tool length/diameter	250 mm/ø 80 mm
	Tool adapter	HSK-63A
Automation	Controller	Siemens 840D sl
Workpiece	Dimensions	120 x 25 x 40 mm
	Material	1.4305 stainless steel



OPEN MIND Technologies AG
 Argelsrieder Feld 5 • 82234 Wessling • Germany
 Phone: +49 8153 933-500 • Fax: +49 8153 933-501
 E-mail: Info.Europe@openmind-tech.com
 Internet: www.openmind-tech.com



DECKEL MAHO Seebach GmbH | HSC Center Geretsried
 Lausitzer Straße 7 • 82538 Geretsried • Germany
 Phone: +49 8171 817-0 • Fax: +49 8171 817-119
 E-mail: info@dmgmori.com
 Internet: www.dmgmori.com